



Maine's Wildlife Action Plan

MDIFW'S Mission



Conserve, protect and enhance fish
and wildlife resources



Funding for Nongame Species



- Game species
 - Pittman–Robertson (wild birds and mammals)
 - Dingle–Johnson (sport fish)
- Nongame
 - No stable source



State Wildlife Grants (SWG)



- 2001: Wildlife Conservation and Restoration Program
- Restore/enhance at risk wildlife populations and habitats
- Interior Appropriations / Land and Water Conservation Fund
- Funding based on land area and population



Match Sources for SWG



Non-federal match required
(typically 35–25%)

The SWG Program



IS

- Nation's core program to prevent listing
- Supported by > 3,000 groups
 - Strong bipartisan support
- Non-regulatory
- Cooperative effort with partners

IS NOT

- Land use plan
- Land acquisition plan
- New T/E species plan



**In order to qualify for State
Wildlife Grants, each state must
have a Wildlife Action Plan**



Scope of Wildlife Action Plans



- Identify and focus on “species in greatest need of conservation” (SGCN)
- Keep common species common
- Supplement, not replace existing programs/projects
- Build/strengthen partnerships



A look back ... 2005

Maine's Wildlife Action Plan



- Comprehensive Wildlife Conservation Strategy
- Landscape conservation focus
- Single-species planning for those “at risk”



SWG Accomplishments 2005–Present



1. Surveys and inventories
2. Research
3. Population management
4. Habitat conservation
5. Education and outreach



**In order to qualify for State
Wildlife Grants, each state must
have a Wildlife Action Plan**

Must be updated every ten years



Revising Maine's Wildlife Action Plan



- October 1, 2015 deadline
- Must be approved by USFWS
- New requirements / expectations



A look forward ... 2015 National Guidance



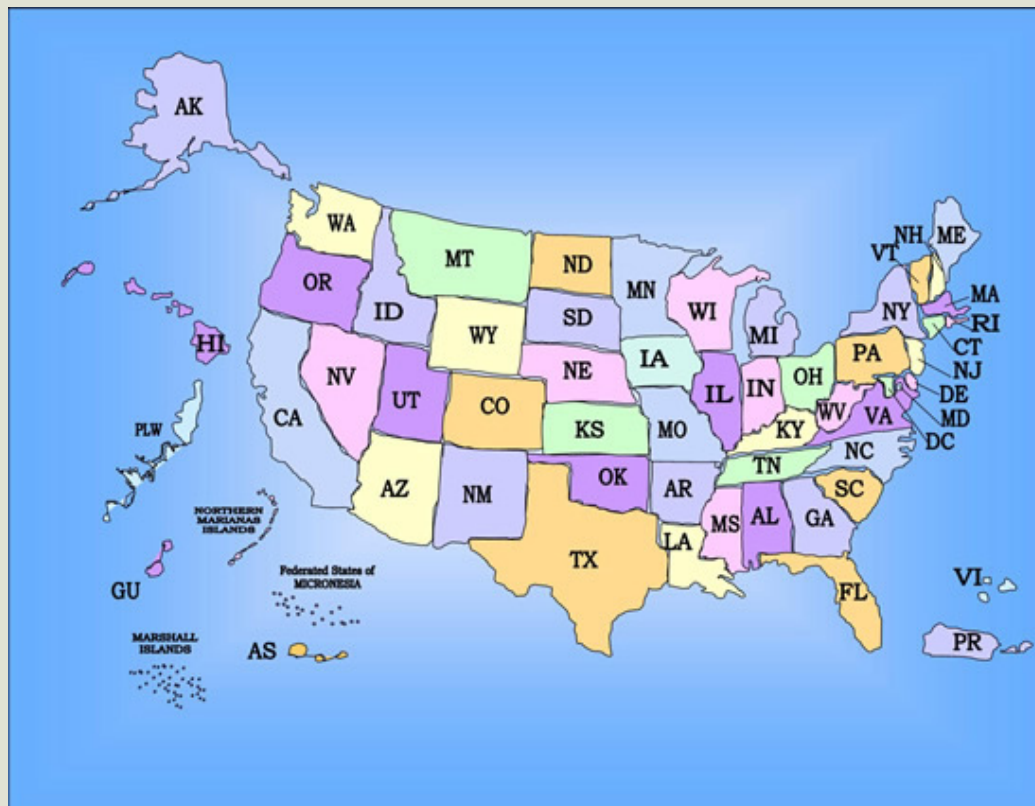
- Much more prioritization!!
- Much more collaboration!!
- Strive for succinct plans!
- Performance monitoring standards
- Adaptive management
- Address climate change issues



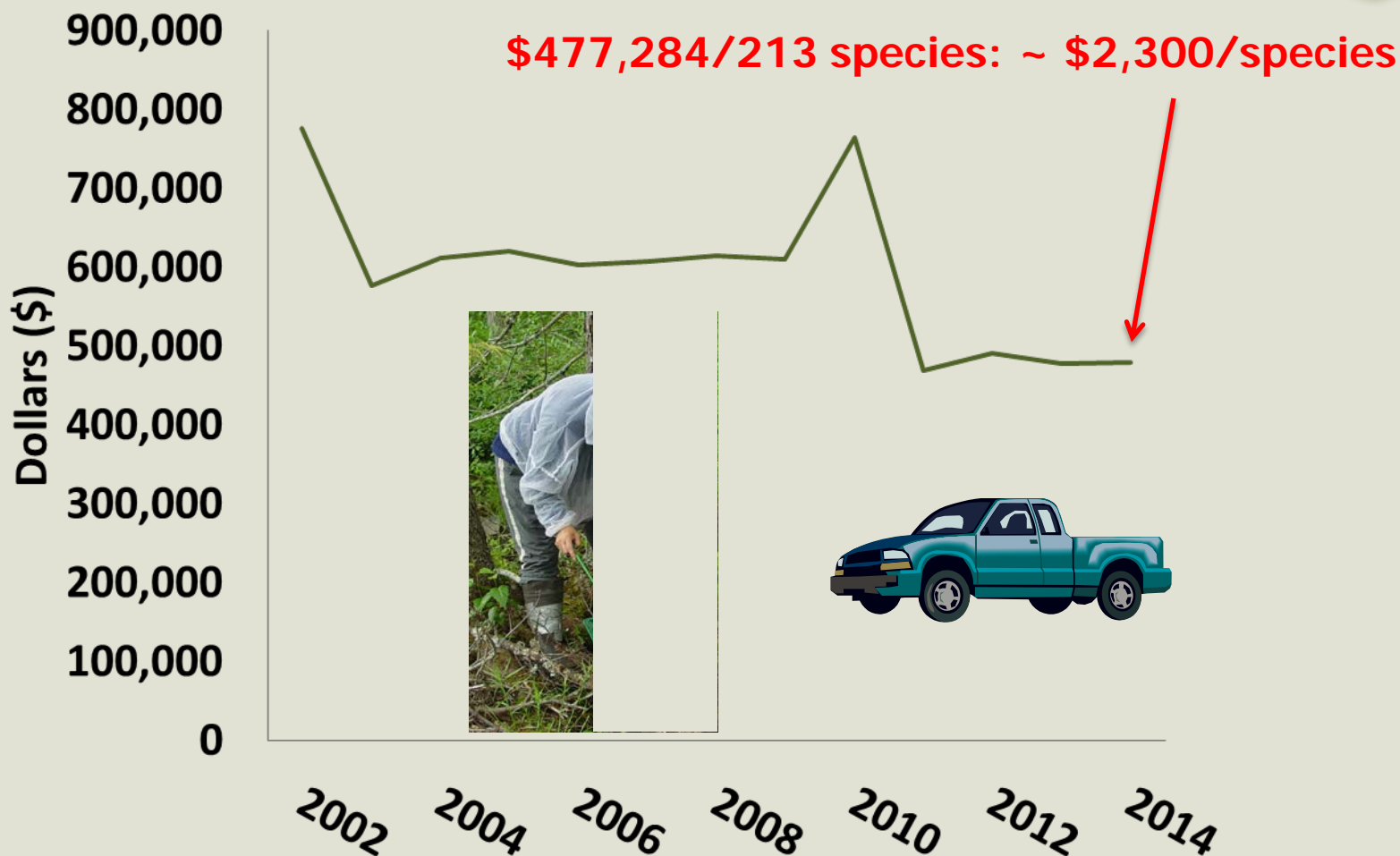
Why Species Prioritization? A National Perspective



- 56 states and territories
- 2005: >12,000 SGCN
- 2014: \$47.9M
 - \$4,000/species



Why Species Prioritization? Maine's Perspective



Where are we in our revision?



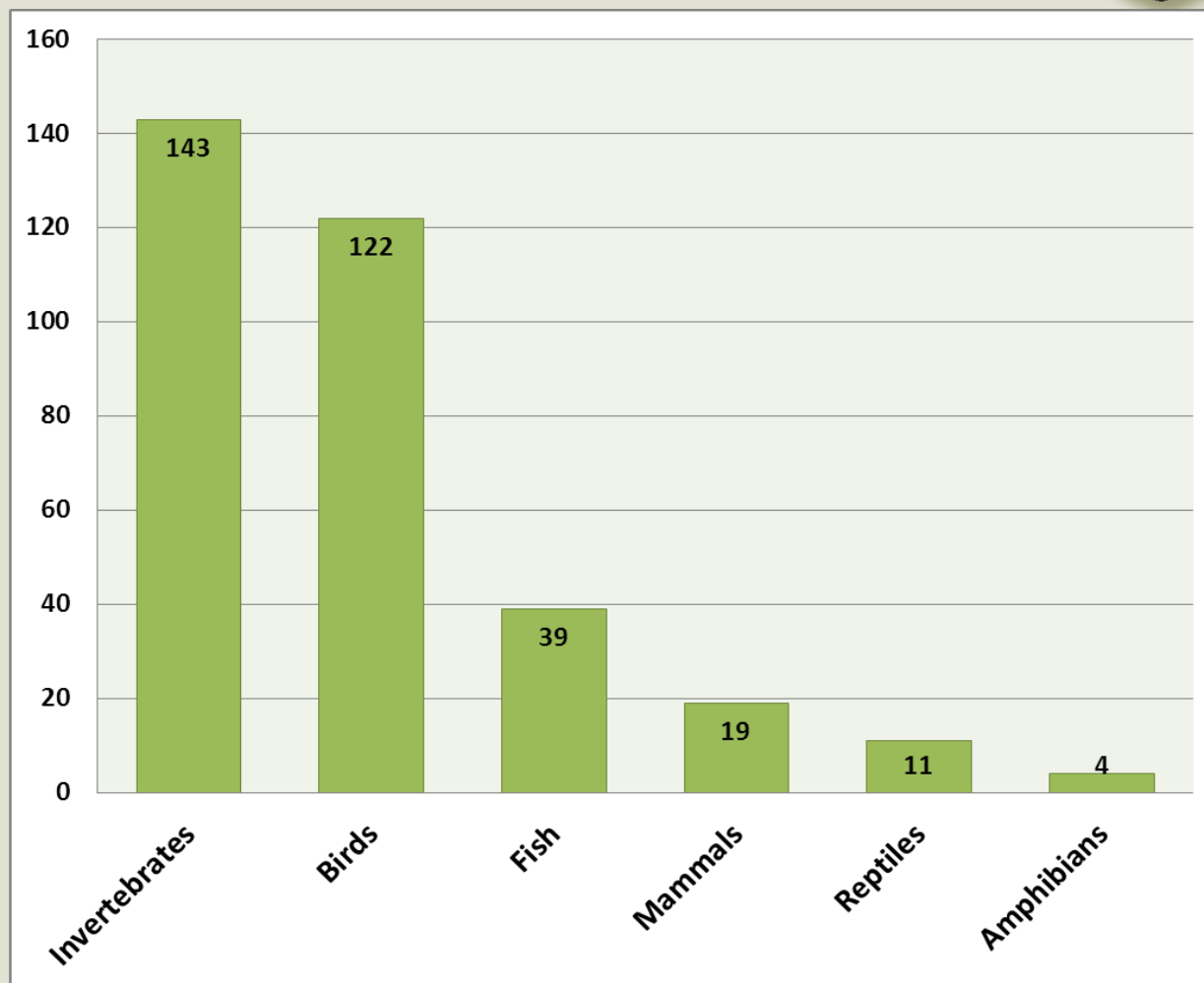
1. SGCN abundance & distribution
2. Location & condition of habitats
3. Management issues / stressors
4. Conservation actions
5. Monitoring & performance standards
6. Procedures to review the plan
7. Coordination with partners
8. Public participation



Total Maine Draft SGCN (2015) (Element 1)



2015: 338 spp.
Priority 1: 54 spp.
Priority 2: 116 spp.
Priority 3: 168 spp.



Linking SGCN to Habitats (Element 2)








SpeciesStatus_fe : Database (Access 2007 - 2010) - Microsoft Access

File Home

frmMain

MAINE'S FISHERIES AND WILDLIFE ACTION PLAN



SEARCH DATABASE

CREATE REPORTS

OPEN DATA ENTRY FORM

EXIT DATABASE

SpeciesStatus_fe : Database (Access 2007 - 2010) - Microsoft Access

File Home

frmSpeciesStatus

SPECIES: *Myotis leibii* (Eastern Small-footed Myotis)

Population: **No population specified** Species ID: 126 Status ID: 75

Comments: Northeast endemic with few records from Maine and considered rare throughout its range.

2005 CWCS Priority: 2 2015 SGCN Priority: 1

State Status: SC Federal Status: Tracked ☒

Habitat Threats Listing History Recommendations

21 Key Habitats (2005 CWSC)

Habitat Type	CWCS Habitat	HabitatID
Primary	Cliff Face and Rocky Outcrops (includin	UR
Secondary	Caves and Mines	UCM
Secondary	Deciduous and Mixed Forest	UD

Northeast Terrestrial Habitat Classification System (NETHCS) - 2015 Wildlife Action Plan

Macrogroup Name

Habitat System **double click row to view definition**

ID	2015 Habitat System Name	2005 ID
47	Acadian-North Atlantic Rocky Coast	CC
58	Laurentian-Acadian Lakeshore Beach	CC
48	North Atlantic Cobble Shore	CC
106	Estuaries and Bays	CE
105	Marine Open Water	CO

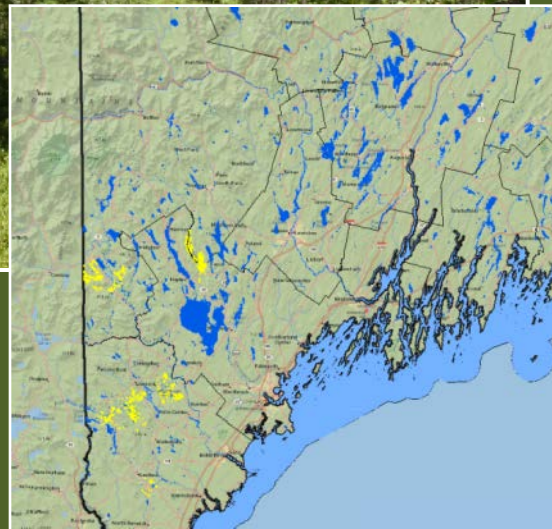
Associate selected habitat systems with species

HABITATS ASSOCIATED WITH SPECIES

☒ 2015 Habitat Review Completed **double click Habitat Notes field to expand**

MacrogroupName	HabitatSystemName	HabNotes	SpHabitID	2005 Hab
Boreal Upland Forest	Acadian Low-Elevation Spruce-Fir Forest and Flats	"secondary habitat" for upl	2537	UC
Boreal Upland Forest	Acadian Sub-Boreal Spruce Barrens	"secondary habitat" for upl	2542	UC
Cliff and Talus	Laurentian-Acadian Acidic Cliff and Talus	"primary habitat" for ledge	22	UR
Cliff and Talus	Laurentian-Acadian Calcareous Cliff and Talus	"secondary habitat" for led	21	UR
Extractive	Subsurface Mines & Caves	"primary habitat" for hiberi	2562	NA
Outcrop / Summit Scrub	Laurentian-Acadian Calcareous Rocky Outcrop	"secondary habitat" for led	20	UR

Northeastern Interior Pine Barrens



9,000 acres, or
 $1/20^{\text{th}}$ of 1% of the
state...

42 SGCN!



Edward's hairstreak

Shrublands and Grasslands – 98 SGCN



30,000 acres, or <0.15% of the state



Upland sandpiper

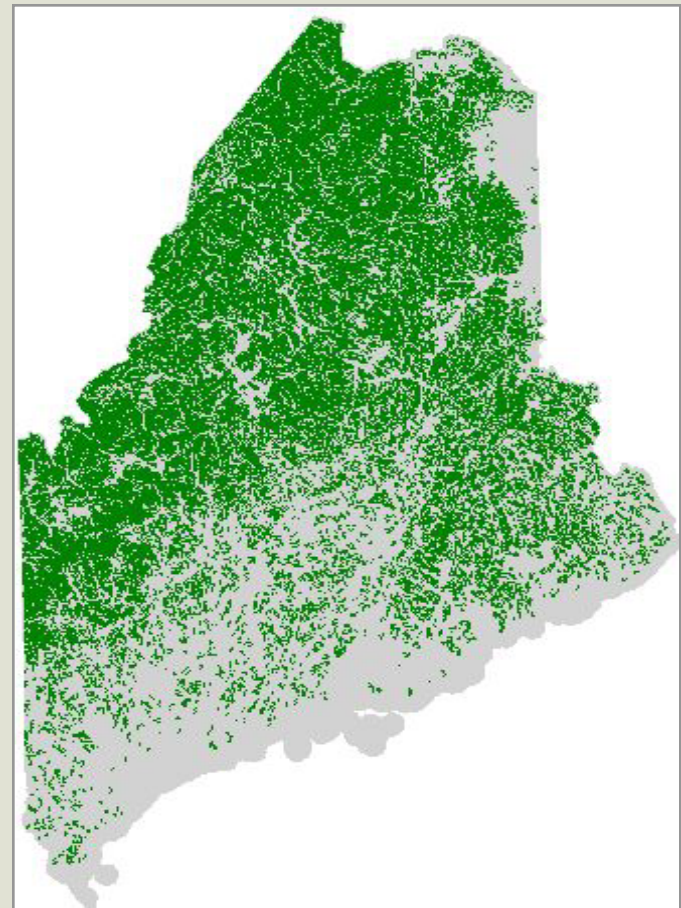


Northern black racer

2015 Theme: Greater Public Involvement (Elements 7 & 8)



- Not just MDIFW's plan
 - 70 partner organizations



Public Participation



- Conservation Partner Meetings (~5)
- Steering Committee
- Landowner Ad-Hoc
- Public Outreach Committee
 - Website
 - Info Graphics
 - Public Comment Period

Next Steps



- Identify 'threats' to SGCN and habitats
- Prioritize threats based on severity and reversibility
- Identify Conservation Actions





Questions?